



# Airport Traffic Report

## July 2010

Source: ACI WORLD  
ACI EUROPE

## European passenger traffic up 6.3% during July 2010

The '**ACI EUROPE Airport Traffic Report - July 2010**' includes **120 airports** in total.




The overall **passenger** traffic at European airports increased by **6.3%** in **July 2010** compared with July 2009. The overall **freight** traffic among European airports increased **20.1%** in July 2010 when compared with the corresponding month in 2009. The overall figure for **movements** at European airports increased **2.9%** in July 2010 when compared with July 2009.




The accumulated figure for **passenger** traffic **January to July 2010** increase by **3.2%** compared with the corresponding period 2009. The accumulated figure for **freight** traffic during **January to July** increased by **24.2%** and **movements** decreased by **-0.9%** during the corresponding period when compared with 2009.




Airports welcoming more than 25 million passengers per year (Group 1), airports welcoming between 10 and 25 million passengers (Group 2), airports welcoming between 5 and 10 million passengers (Group 3) and airports welcoming less than 5 million passengers per year (Group 4) reported an average increase/decrease of **4.4%**, **7.1%**, **8.3%** and **7.3%** respectively when compared with July 2009. The same comparison of July 2010 with July 2008 demonstrates an average decrease of **1.4%**, **1.5%**, **-0.6%** and **4.8%** respectively.




Examples of airports that experienced the highest increase in passenger traffic per group, when comparing July 2010 with July 2009, include:

- **Group 1 airports** – Munich (+**11.1%**), Rome FCO (+**8.0%**), Frankfurt (+**7.8%**) and Istanbul IST (+**5.8%**)
- **Group 2 airports** – Moscow SVO (+**35.1%**), Antalya (+**21.4%**), Moscow DME (+**18.4%**) and Berlin TXL (+**11.6%**)
- **Group 3 airports** – Istanbul SAW (+**91.0%**), Ankara (+**31.0%**), Moscow VKO (+**28.0%**) and Faro (+**12.2%**)
- **Group 4 airports** – Brindisi (+**43.0%**), Charleroi (+**40.2%**), Split (+**23.9%**), and Billund (+**23.7%**).

Airport		Passengers		Commercial movements		Freight	
		 July 2010		 July 2010		 July 2010	
LONDON	LHR	6720312	3,6%	41438	2,9%	130094	19,1%
PARIS	CDG	5895964	3,2%	45385	-1,9%	N/A	N/A
FRANKFURT	FRA	5281336	7,8%	41079	3,9%	185461	20,6%
MADRID	MAD	4914764	1,6%	38704	-0,5%	30079	20,1%
AMSTERDAM	AMS	4737638	4,4%	37036	1,0%	130220	20,2%
ROME	FCO	3642079	8,0%	30236	3,6%	13784	16,4%
LONDON	LGW	3434345	-3,2%	23319	-5,1%	9559	95,1%
ANTALYA	AYT	3408247	21,4%	20422	14,1%	711	63,8%
MUNICH	MUC	3378217	11,1%	34049	2,8%	24498	33,6%
ISTANBUL	IST	3193912	5,8%	24770	-1,0%	37390	15,0%
PALMA DE MALLORCA	PMI	3043800	2,1%	21909	2,2%	1686	-1,0%
BARCELONA	BCN	2973359	5,1%	25718	-1,2%	8935	10,0%
PARIS	ORY	2604672	2,8%	19965	-2,1%	N/A	N/A
MOSCOW	DME	2470603	18,4%	20696	14,4%	11216	22,0%
ZURICH	ZRH	2253595	5,8%	20874	4,2%	35435	27,1%
COPENHAGEN	CPH	2215001	11,3%	20773	7,1%	N/A	N/A
MOSCOW	SVO	2122742	35,1%	17410	20,4%	10533	18,1%
VIENNA	VIE	2032579	11,3%	22292	0,9%	16219	13,1%
LONDON	STN	2027404	-7,2%	14143	-8,7%	17952	16,0%
DUBLIN	DUB	2027294	-4,3%	15130	-0,3%	8860	16,7%
MANCHESTER	MAN	2023295	-1,2%	15147	-3,1%	10647	23,9%
DÜSSELDORF	DUS	1955141	4,2%	18921	2,3%	8685	43,8%
MILAN	MPX	1921117	10,7%	17880	7,1%	39071	21,4%
BRUSSELS	BRU	1857581	2,1%	19131	-1,0%	37150	16,8%
OSLO	OSL	1825690	8,6%	16749	5,0%	3707	-7,2%
ATHENS	ATH	1699208	-7,8%	16793	-12,1%	7970	-7,4%
STOCKHOLM	ARN	1487286	9,7%	13182	6,5%	6589	53,0%
LISBON	LIS	1487271	6,9%	13552	6,3%	8816	26,7%
MALAGA	AGP	1476528	10,1%	11482	10,6%	313	-6,0%
BERLIN	TXL	1431898	11,6%	13792	5,6%	1981	34,0%
PRAGUE	PRG	1289152	-1,8%	14667	-6,6%	4601	57,9%
ISTANBUL	SAW	1271913	91,0%	10019	81,3%	2088	238,6%
HAMBURG	HAM	1270221	7,8%	12527	3,3%	5667	2,8%
HELSINKI	HEL	1191208	5,8%	13049	5,1%	12956	38,8%
NICE	NCE	1128013	-0,7%	13127	0,8%	1375	36,3%
GENEVA	GVA	1123696	7,3%	10891	4,7%	3542	41,5%
ALICANTE	ALC	1099380	4,1%	7900	2,9%	295	-12,4%
MOSCOW	VKO	1073401	28,0%	10526	17,4%	3177	31,9%
COLOGNE	CGN	1036437	-0,2%	11557	0,4%	57607	20,2%
WARSAW	WAW	974884	7,2%	11658	3,7%	3701	38,9%
EDINBURGH	EDI	961162	0,5%	10144	0,2%	1614	-21,3%
IBIZA	IBZ	955349	13,0%	8617	11,9%	600	45,7%
STUTTGART	STR	948982	6,6%	10101	-2,1%	1826	13,0%
BIRMINGHAM	BHX	928283	-4,2%	8551	-4,0%	2235	60,2%
BUDAPEST	BUD	895937	3,1%	9804	-2,0%	5639	23,8%
MILAN	LIN	830256	-0,6%	8519	0,6%	1533	20,0%
MARSEILLE	MRS	820432	7,1%	9397	1,6%	9397	-4,1%
MILAN	BGY	792013	6,2%	6124	2,2%	9624	5,2%
GLASGOW	GLA	791620	-3,4%	7255	0,7%	221	-26,1%
ANKARA	ESB	776219	31,0%	5812	22,0%	1224	25,0%
FARO	FAO	774416	12,2%	5403	14,3%	36	-17,9%
GRAN CANARIA	LPA	752953	4,9%	7949	4,9%	1864	-9,9%
VENICE	VCE	733256	4,6%	6796	0,1%	3532	8,6%
BERLIN	SXF	730773	6,9%	5859	2,0%	380	17,3%
CATANIA	CTA	678263	6,5%	5773	5,2%	743	36,3%
NAPLES	NAP	596805	6,2%	5504	2,1%	80	-30,8%
GIRONA	GRO	595720	0,9%	3997	0,1%	3	-73,1%
TENERIFE	TFS	591028	6,8%	3863	7,4%	335	-16,5%
TOULOUSE	TLS	566960	1,7%	6735	0,3%	3434	0,6%
CHARLEROI	CRL	564261	40,2%	3559	42,2%	N/A	N/A
BOLOGNA	BLQ	558249	13,8%	6134	7,7%	2439	3,2%
HANOVER	HAJ	557786	3,7%	5902	0,8%	337	16,2%
PORTO	OPO	547558	20,7%	5245	6,7%	2346	-3,9%
RIGA	RIX	521069	20,8%	6555	16,6%	653	65,7%
VALENCIA	VLC	512918	1,3%	5879	-2,3%	957	2,2%
BUCHAREST	OTP	501345	9,6%	6829	3,5%	1693	-2,7%
EAST MIDLANDS	EMA	499021	-1,1%	5871	-1,8%	23271	7,9%
LANZAROTE	ACE	480529	8,2%	4161	15,3%	277	-33,8%

Airport	Passengers		Commercial movements		Freight		
	 July 2010		 July 2010		 July 2010		
PALERMO	PMO	460335	-3,1%	4502	-7,9%	88	-17,8%
MENORCA	MAH	456637	6,2%	4149	9,6%	294	-3,7%
BASEL	BSL	444079	13,0%	5056	7,0%	3840	67,0%
BERGEN	BGO	433899	12,7%	5339	8,5%	310	8,9%
BILBAO	BIO	407510	5,9%	4439	3,9%	257	4,4%
FUERTEVENTURA	FUE	407494	20,8%	3534	16,6%	155	-1,3%
ROME	CIA	404274	-10,8%	2671	-12,4%	1565	-7,7%
MALTA	MLA	403354	15,7%	3307	8,1%	1247	-10,9%
HAHN	HHN	392198	-8,3%	3535	-5,6%	15347	55,5%
CAGLIARI	CAG	388017	1,1%	3417	-8,0%	163	-14,6%
SEVILLA	SVQ	386662	-3,8%	3696	-2,3%	433	6,7%
TENERIFE	TFN	386102	-1,0%	4999	-1,8%	1190	-30,9%
VERONA	VRN	384355	1,3%	3723	3,3%	434	-18,0%
BORDEAUX	BOD	383613	17,8%	4303	6,0%	538	-0,3%
GOTHENBURG	GOT	370083	21,0%	4381	16,5%	3672	3,5%
BELGRADE	BEG	353125	14,3%	4333	9,3%	649	12,1%
BILLUND	BLL	349293	23,7%	3694	25,4%	5503	30,0%
BARI	BRI	344920	12,7%	3111	4,8%	18	-6,2%
NUREMBERG	NUE	341574	7,3%	4748	-0,7%	764	0,9%
SOFIA	SOF	327101	11,7%	3734	4,4%	1136	14,1%
TURIN	TRN	312496	5,3%	3717	-3,5%	78	-17,0%
OLBIA	OLB	302873	2,2%	2894	-2,0%	31	-11,2%
VARNA	VAR	288953	7,2%	2141	3,2%	9	-32,0%
STAVANGER	SVG	277437	1,1%	3399	-1,7%	186	-16,8%
ABERDEEN	ABZ	276940	-4,1%	8392	-4,1%	520	20,1%
TRONDHEIM	TRD	270285	4,7%	3367	4,0%	126	1,4%
SPLIT	SPU	249640	23,9%	2300	148,4%	87	-20,1%
REUS	REU	233683	-12,3%	1630	-2,7%	67	9540,6%
DUBROVNIK	DBV	225227	16,8%	1980	17,4%	48	-23,4%
LJUBLJANA	LJU	188943	1,6%	2944	-9,3%	566	8,0%
SOUTHAMPTON	SOU	187757	-1,4%	4143	1,9%	16	-27,3%
BRINDISI	BDS	183732	43,0%	1388	33,8%	4	-1,4%
LUXEMBOURG	LUX	176404	7,9%	4329	3,4%	57361	18,5%
PRISTINA	PRN	169880	12,2%	709	1,6%	88	-24,1%
SHANNON	SNN	166206	-40,4%	1910	-29,7%	1527	1,7%
TROMSOE	TOS	159771	5,1%	2663	7,0%	181	9,2%
BODO	BOO	151169	6,0%	2967	-1,4%	95	-8,6%
VILNIUS	VNO	149733	7,3%	2258	12,9%	317	34,9%
TALLIN	TLL	135762	5,3%	2378	11,6%	391	-64,6%
MALMO	MMX	117053	7,1%	1492	5,9%	2593	32,6%
STRASBOURGH	SXB	98706	-3,8%	2146	-12,8%	15	-17,3
STOCKHOLM	BMA	95319	1,5%	1864	-3,1%	21	-8,7%
SKOPJE	SKP	90269	17,0%	1176	11,4%	179	12,5%
AALESUND	AES	74152	17,6%	713	2,4%	25	-45,1%
TRIESTE	TRS	73759	1,3%	827	-11,7%	12	20,0%
SARAJEVO	SJJ	72615	6,9%	537	-1,8%	165	-10,3%
TOULON	TLN	66151	-12,5%	1376	-4,7%	N/A	N/A
KRISTIANSAND	KRS	64039	0,5%	1337	-3,7%	16	-15,3%
LIEGE	LGG	53983	-19,7%	2581	1,9%	49570	26,1%
UMEA	UME	51158	3,5%	686	6,5%	7	-12,5%
HAUGESUND	HAU	50143	11,3%	463	19,3%	18	-28,0%
OHRID	OHD	7341	-4,2%	81	-19,0%	N/A	N/A

Airport		Passengers		Commercial movements		Freight	
		 January - July 2010		 January - July 2010		 January - July 2010	
London	LHR	36927381	-2,3%	256976	-4,9%	847030	22,3%
Paris	CDG	33033402	-1,0%	283544	-7,2%	N/A	N/A
Frankfurt	FRA	29773898	2,5%	259269	-1,2%	1256962	30,4%
Madrid	MAD	28549809	2,9%	252219	-0,4%	209521	31,1%
Amsterdam	AMS	25239369	1,7%	219637	-3,8%	846334	21,4%
Rome	FCO	20298251	6,2%	185633	-0,7%	88929	29,2%
Munich	MUC	19196507	4,1%	209138	-5,2%	151424	28,1%
Istanbul	IST	18160806	9,2%	155069	3,2%	258071	34,4%
London	LGW	17598998	-4,1%	133687	-5,1%	60977	56,8%
Barcelona	BCN	16124953	3,4%	156132	-4,7%	62021	28,4%
Paris	ORY	14562936	-1,6%	125751	-4,0%	N/A	N/A
Zurich	ZRH	12736265	3,5%	129782	1,1%	176670	22,2%
Moscow	DME	12235087	24,8%	116557	17,8%	72027	31,0%
Copenhagen	CPH	12099143	6,8%	136379	2,2%	N/A	N/A
Antalya	AYT	11841316	23,8%	77971	21,1%	5680	96,7%
Palma De Mallorca	PMI	11694202	-2,8%	98562	-2,3%	10056	2,4%
Vienna	VIE	10931763	6,6%	140460	0,2%	128863	34,6%
Milan	MXP	10670847	6,7%	108305	1,8%	240676	32,1%
Oslo	OSL	10658267	2,9%	119130	-1,0%	26992	-9,9%
Moscow	SVO	10621404	32,8%	100433	14,6%	68710	29,6%
London	STN	10553234	-7,6%	83364	-7,8%	116002	14,6%
Düsseldorf	DUS	10389820	4,0%	116186	-0,4%	49568	48,9%
Manchester	MAN	9899082	-8,7%	84282	-12,5%	64962	18,4%
Brussels	BRU	9569278	-1,8%	117541	-6,2%	253052	6,7%
Stockholm	ARN	9371178	0,7%	102844	-4,5%	26646	29,0%
Athens	ATH	8902532	-1,5%	104801	-4,6%	51084	-5,4%
Berlin	TXL	8244564	3,0%	86853	-0,1%	11799	32,1%
Lisbon	LIS	7788205	4,4%	78813	3,3%	54916	22,9%
Helsinki	HEL	7340192	-0,3%	96057	-3,4%	78281	31,2%
Hamburg	HAM	7201578	4,1%	79073	0,8%	40997	12,7%
Geneva	GVA	7040804	4,0%	73792	-1,7%	21520	36,2%
Malaga	AGP	6638959	-0,2%	56856	0,2%	1743	-13,9%
Prague	PRG	6409744	-0,6%	87783	-5,9%	27830	44,1%
Istanbul	SAW	6278923	94,0%	53311	92,5%	11370	89,2%
Cologne	CGN	5485231	0,1%	69268	-0,1%	347826	12,8%
Nice	NCE	5475089	-4,1%	67621	-3,2%	8856	46,2%
Gran Canaria	LPA	5419587	2,7%	56885	2,9%	13744	-4,8%
Moscow	VKO	5283086	28,0%	59667	13,1%	20120	41,1%
Alicante	ALC	5276406	3,6%	42257	3,2%	1846	0,4%
Stuttgart	STR	4997524	-0,5%	60969	-6,8%	11825	26,8%
Warsaw	WAW	4895238	3,8%	70165	0,7%	22590	24,3%
Birmingham	BHX	4861605	-7,2%	50430	-9,9%	12473	97,8%
Edinburgh	EDI	4849368	-7,0%	58511	-7,5%	13018	-8,7%
Milan	LIN	4636169	-5,1%	53652	-5,1%	8986	7,9%
Budapest	BUD	4466037	0,6%	56724	-6,4%	34395	27,3%
Milan	BGY	4331516	7,6%	36856	3,6%	60701	5,2%
Tenerife	TFS	4119663	1,2%	28228	4,5%	2464	-23,9%
Berlin	SXF	4038657	7,2%	35873	4,9%	2738	27,2%
Venice	VCE	3838881	1,7%	39067	-3,8%	21735	24,2%
Glasgow	GLA	3713730	-10,8%	39744	-9,4%	2257	56,1%
Naples	NAP	3093848	4,0%	31930	-1,8%	581	-6,8%
East Midlands	EMA	3088702	-6,4%	38798	-7,5%	154199	5,5%
Bologna	BLQ	3018111	14,7%	36777	7,7%	15455	7,5%
Girona	GRO	2898309	-3,6%	21798	-3,0%	24	-19,1%
Faro	FAO	2891915	2,5%	22156	4,8%	177	-61,9%
Porto	OPO	2866653	15,3%	31018	2,9%	17274	11,1%
Charleroi	CRL	2845591	34,1%	20137	42,0%	N/A	N/A
Lanzarote	ACE	2778491	5,3%	25373	9,7%	2140	-17,4%
Valencia	VLC	2768895	2,7%	36764	-4,3%	6653	18,7%
Hanover	HAJ	2762866	-3,0%	32600	-8,8%	2823	35,7%
Bergen	BGO	2688115	1,2%	39631	0,3%	1564	1,1%
Ibiza	IBZ	2616793	9,0%	27603	6,3%	1909	7,7%
Riga	RIX	2615696	16,2%	37248	12,3%	3648	32,9%
Bilbao	BIO	2592694	9,7%	31741	5,3%	7008	20,2%
Rome	CIA	2532726	-7,2%	18355	-7,8%	10149	2,5%
Sevilla	SVQ	2389448	2,8%	24894	-0,7%	3333	8,6%
Tenerife	TFN	2329875	0,7%	33286	0,1%	8910	-14,1%
Fuerteventura	FUE	2277169	8,3%	21149	6,6%	995	-11,7%

Airport		Passengers		Commercial movements		Freight	
		 January - July 2010	January - July 2010	 January - July 2010	January - July 2010	 January - July 2010	January - July 2010
Gothenburg	GOT	2270227	7,5%	32250	3,6%	15079	5,0%
Basel	BSL	2225908	2,2%	30529	1,7%	23939	42,8%
Bordeaux	BOD	2077794	7,5%	26982	-1,1%	3881	8,1%
Turin	TRN	2057006	6,8%	25205	-8,7%	653	-16,5%
Hahn	HHN	1993244	-7,8%	20650	-4,5%	82178	67,5%
Trondheim	TRD	1941458	-0,2%	26658	-0,7%	933	-12,5%
Cagliari	CAG	1913961	4,1%	18971	-3,2%	1060	-9,2%
Stavanger	SVG	1912838	-2,4%	27163	-7,2%	1500	-10,6%
Sofia	SOF	1878783	3,0%	23288	-1,7%	7362	-4,4%
Bari	BRI	1872350	17,3%	18530	7,6%	122	-29,7%
Malta	MLA	1789394	11,5%	16660	6,4%	8977	0,9%
Aberdeen	ABZ	1562924	-9,4%	51872	-8,1%	2897	-4,7%
Menorca	MAH	1309540	1,8%	14821	-0,2%	1365	-8,7%
Stockholm	BMA	1121711	2,4%	22211	2,0%	81	12,5%
Southampton	SOU	1000064	-2,6%	23403	-1,4%	43	-61,9%
Tromsø	TOS	948209	0,0%	17502	1,7%	1186	-4,4%
Bodo	BOO	916091	1,6%	20395	-0,8%	638	-13,4%
Luxembourg	LUX	896028	2,7%	27168	-0,2%	403754	16,0%
Malmö	MMX	892897	2,2%	12419	0,3%	9802	22,8%
Brindisi	BDS	842418	40,9%	7163	21,1%	97	160,8%
Vilnius	VNO	828446	12,2%	14842	24,7%	1988	32,8%
Reus	REU	782548	-18,8%	5831	-19,2%	N/A	N/A
Ljubljana	LJU	744142	-6,4%	16231	-13,9%	3646	4,7%
Dubrovnik	DBV	661856	9,2%	6680	10,2%	226	-22,8%
Alesund	AES	461955	4,3%	5838	0,4%	282	-40,4%
Kristiansand	KRS	452406	-7,2%	10049	-11,3%	181	-20,8%
Haugesund	HAU	307573	9,4%	3777	15,6%	147	-24,2%
Liege	LGG	167566	-14,7%	16599	12,8%	372646	47,3%

----- Preliminary traffic figures -----

### Total commercial passengers

**International passengers** (enplaned + deplaned) + **domestic passengers** (enplaned + deplaned) + **direct transit passengers** (passengers who arrive at and depart from the airport on a flight bearing the same number. They are counted only ONCE).

### Commercial movements

Landing or take off of an aircraft operating a scheduled or non scheduled commercial service.

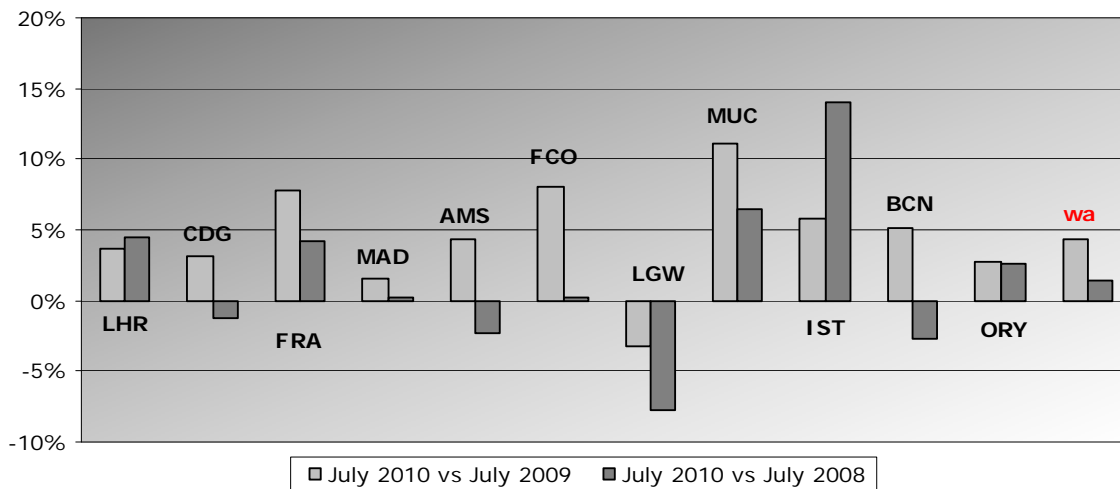
### Freight

Freight loaded and unloaded (arriving or departing) at the airport. Freight comprises goods, newspapers, diplomatic bags, parcel post and express parcel.

**Group 1**  
**Airports welcoming more than 25 million passengers per year**  
**(percentage traffic variation July 2010 versus 2009 and 2008)**

Airport	2010v2009 variation %	2010v2008 variation %
LHR	3,6%	4,5%
CDG	3,2%	-1,2%
FRA	7,8%	4,2%
MAD	1,6%	0,3%
AMS	4,4%	-2,3%
FCO	8,0%	0,2%
LGW	-3,2%	-7,7%
MUC	11,1%	6,4%
IST	5,8%	14,1%
BCN	5,1%	-2,7%
ORY	2,8%	2,6%
<b>wa*</b>	<b>4,4%</b>	<b>1,4%</b>

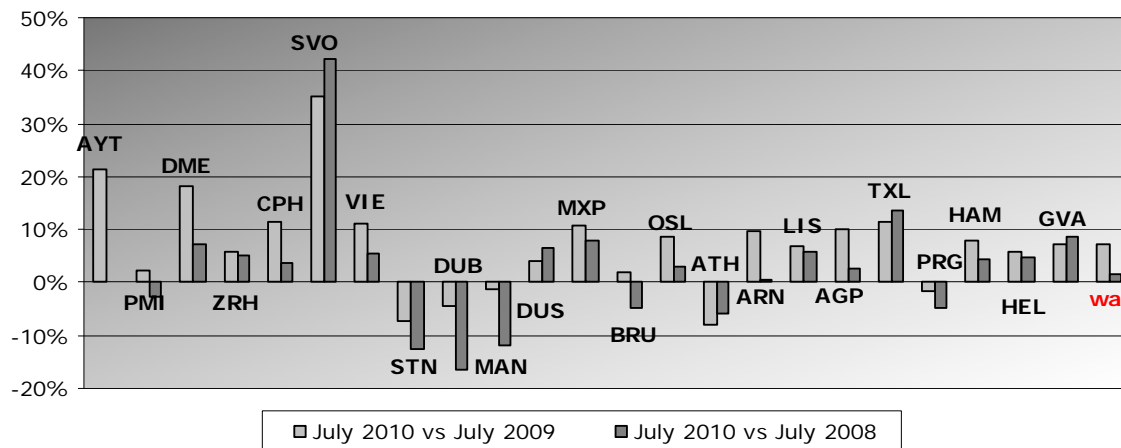
\*weighted average =  $\text{SUM}(\% \text{change} * \text{pax}) / \text{SUM}(\text{pax})$



**Group 2**  
**Airports welcoming between 10 and 25 million passengers**  
**per year (percentage traffic variation July 2010 versus 2009 and 2008)**

Airport	2010v2009 variation %	2010v2008 variation %
AYT	21,4%	N/A
PMI	2,1%	-2,6%
DME	18,4%	7,3%
ZRH	5,8%	5,0%
CPH	11,3%	3,8%
SVO	35,1%	42,0%
VIE	11,3%	5,5%
STN	-7,2%	-12,5%
DUB	-4,3%	-16,6%
MAN	-1,2%	-11,7%
DUS	4,2%	6,3%
MXP	10,7%	7,9%
BRU	2,1%	-4,6%
OSL	8,6%	3,0%
ATH	-7,8%	-6,0%
ARN	9,7%	0,5%
LIS	6,9%	5,8%
AGP	10,1%	2,7%
TXL	11,6%	13,5%
PRG	-1,8%	-4,6%
HAM	7,8%	4,3%
HEL	5,8%	4,9%
GVA	7,3%	8,5%
<b>wa*</b>	<b>7,1%</b>	<b>1,5%</b>

\*weighted average =  $\text{SUM}(\% \text{change} * \text{pax}) / \text{SUM}(\text{pax})$

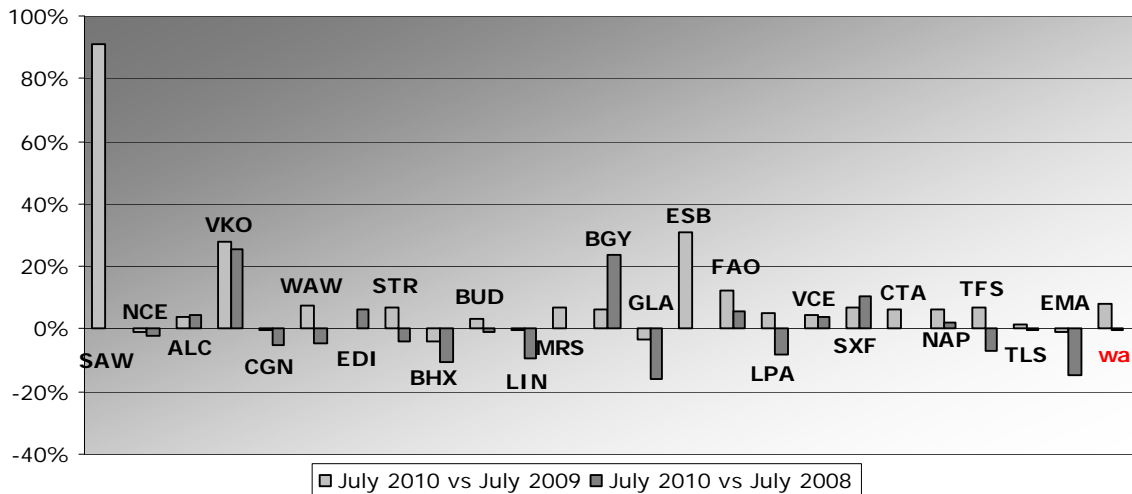




**Group 3**  
**Airports welcoming between 5 and 10 million passengers**  
**per year (percentage traffic variation July 2010 versus 2009 and 2008)**

Airport	2010v2009 variation %	2010v2008 variation %
SAW	91,0%	N/A
NCE	-0,7%	-2,4%
ALC	4,1%	4,7%
VKO	28,0%	25,4%
CGN	-0,2%	-5,4%
WAW	7,2%	-4,3%
EDI	0,5%	6,1%
STR	6,6%	-3,7%
BHX	-4,2%	-10,4%
BUD	3,1%	-1,1%
LIN	-0,6%	-9,3%
MRS	7,1%	N/A
BGY	6,2%	24,0%
GLA	-3,4%	-16,1%
ESB	31,0%	N/A
FAO	12,2%	5,5%
LPA	4,9%	-8,0%
VCE	4,6%	4,1%
SXF	6,9%	10,5%
CTA	6,5%	N/A
NAP	6,2%	1,8%
TFS	6,8%	-7,2%
TLS	1,7%	-0,5%
EMA	-1,1%	-14,6%
<b>wa*</b>	<b>8,3%</b>	<b>-0,6%</b>

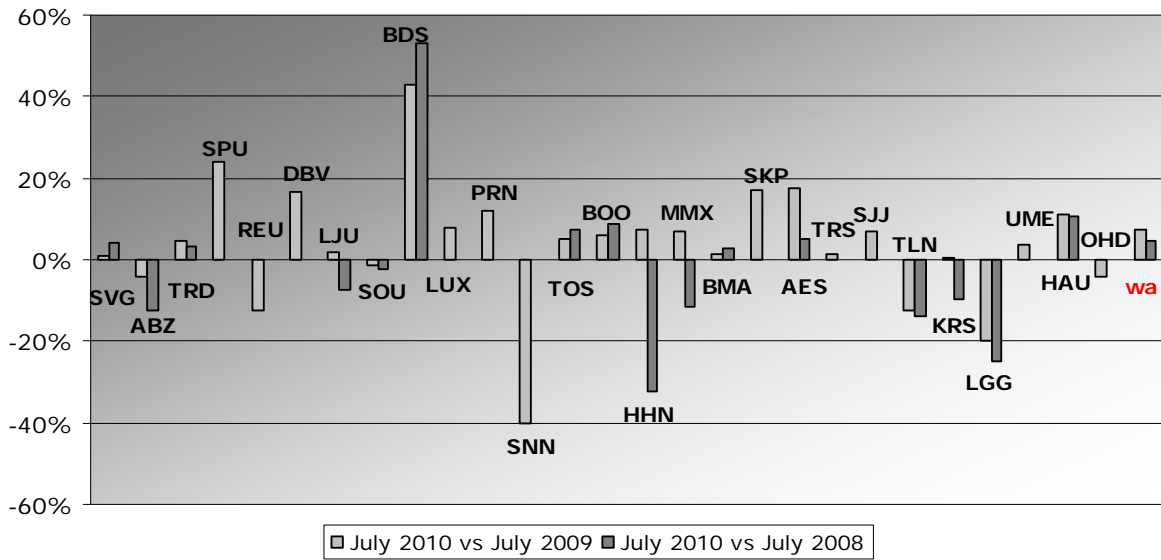
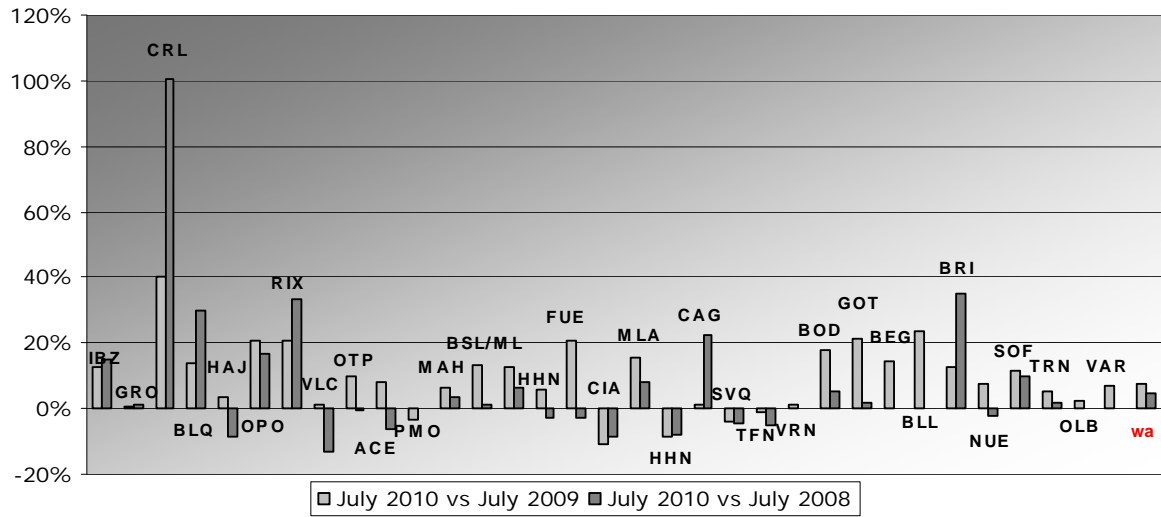
\*weighted average =  $\text{SUM}(\% \text{change} * \text{pax}) / \text{SUM}(\text{pax})$



**Group 4**  
**Airports welcoming less than 5 million passengers**  
**per year (percentage traffic variation July 2010 versus 2009 and 2008)**

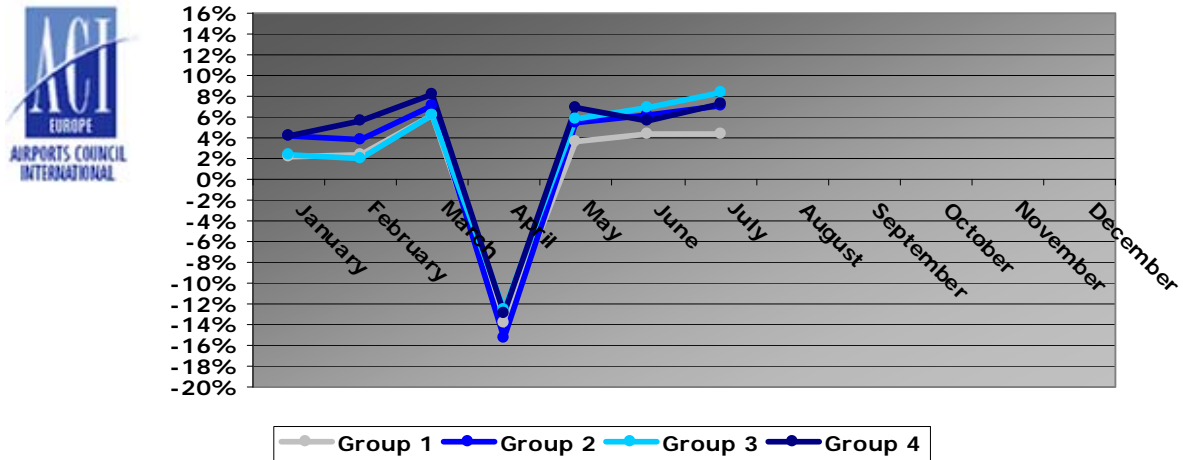
Airport	2010v2009 variation %	2010v2008 variation %
IBZ	13,0%	15,2%
GRO	0,9%	1,1%
CRL	40,2%	100,6%
BLQ	13,8%	30,0%
HAJ	3,7%	-8,7%
OPO	20,7%	16,6%
RIX	20,8%	33,3%
VLC	1,3%	-13,0%
OTP	9,6%	-0,5%
ACE	8,2%	-6,4%
PMO	-3,1%	N/A
MAH	6,2%	3,5%
BSL/ML	13,0%	0,9%
BGO	12,7%	6,2%
BIO	5,9%	-2,8%
FUE	20,8%	-2,6%
CIA	-10,8%	-8,8%
MLA	15,7%	8,4%
HHN	-8,3%	-7,9%
CAG	1,1%	22,6%
SVQ	-3,8%	-4,5%
TFN	-1,0%	-5,0%
VRN	1,3%	N/A
BOD	17,8%	5,5%
GOT	21,0%	1,6%
BEG	14,3%	N/A
BLL	23,7%	N/A
BRI	12,7%	35,3%
NUE	7,3%	-2,0%
SOF	11,7%	9,8%
TRN	5,3%	2,0%
OLB	2,2%	N/A
VAR	7,2%	N/A
SVG	1,1%	4,1%
ABZ	-4,1%	-12,7%
TRD	4,7%	3,3%
SPU	23,9%	N/A
REU	-12,3%	N/A
DBV	16,8%	N/A
LJU	1,6%	-7,5%
SOU	-1,4%	-2,3%
BDS	43,0%	53,3%
LUX	7,9%	N/A
PRN	12,2%	N/A
SNN	-40,4%	N/A
TOS	5,1%	7,3%
BOO	6,0%	8,8%
VNO	7,3%	-32,5%
MMX	7,1%	-11,6%
BMA	1,5%	3,0%
SKP	17,0%	N/A
AES	17,6%	4,9%
TRS	1,3%	N/A
SJJ	6,9%	N/A
TLN	-12,5%	-13,9%
KRS	0,5%	-9,7%
LGG	-19,7%	-24,8%
UME	3,5%	N/A
HAU	11,3%	10,4%
OHD	-4,2%	N/A
<b>wa*</b>	<b>7,2%</b>	<b>4,8%</b>

\*weighted average=SUM(%change\*pax)/SUM(pax)



## Year-to-date airport passenger trends

The graphic illustrates and compares the trends of the different airport Groups 1, 2, 3 and 4 for 2010.



The graphic compares the amount of total commercial passengers 2010 with 2009. The airports included, in this graphic, are: LHR, FRA, CDG, AMS, MAD, IST, LGW, FCO, MUC, BCN, ORY, STN, MAN, MXP, ZRH, CPH, ARN, DUB, OSL, BRU, VIE, DUS, ATH, PMI, AGP, DME, HEL, TXL, LIS, HAM, PRG.

