



Airport Traffic Report

January 2009

European passenger traffic down -10,7% during January 2009




The '**ACI EUROPE Airport Traffic Report - January 2009**' includes **108 airports** in total.




The overall **passenger** traffic at European airports decreased by **-10,7%** in **January 2009** compared with January 2008. The overall **freight** traffic among European airports decreased **-23,6%** in January 2009 when compared with the corresponding month in 2008. The overall figure for **movements** at European airports decreased **-10,8%** in January 2009 when compared with January 2008.

Airports welcoming more than 25 million passengers per year (Group 1), airports welcoming between 10 and 25 million passengers (Group 2), airports welcoming between 5 and 10 million passengers (Group 3) and airports welcoming less than 5 million passengers per year (Group 4) reported an average increase / decrease of **-10,0%**, **-12,0%**, **-12,1%** and **-8,3%** respectively when compared with January 2008. The same comparison of January 2009 with January 2007 demonstrates an average increase of **-7,0%**, **-8,0%**, **-8,9%** and **-4,0%** respectively.

Examples of airports that experienced the highest increase in passenger traffic per group, when comparing January 2009 with January 2008, include:

- **Group 3 airports** – Berlin SXF (**+5,5%**) and Milan/Orio al Serio (**+4,2%**)
- **Group 4 airports** – Liege (**+57,4%**), Sofia (**+14,3%**), Riga (**+10,3%**) and Kristiansand (**+3,5%**).

Airport		Passengers		Commercial movements		Freight	
		 January 2009		 January 2009		 January 2009	
London	LHR	4875448	-2,0%	37928	-2,1%	92580	-12,2%
Paris	CDG	4106798	-6,5%	41081	-6,8%	133601	-17,6%
Frankfurt	FRA	3546740	-10,4%	34620	-6,6%	117466	-23,9%
Madrid	MAD	3136737	-18,5%	33083	-16,5%	21861	-14,9%
Amsterdam	AMS	2915770	-9,0%	29843	-8,2%	90768	-27,3%
Munich	MUC	2170243	-9,5%	27604	-9,6%	13728	-28,9%
Rome	FCO	2017736	-8,6%	24483	-7,4%	6722	-22,6%
London	LGW	1986335	-10,7%	17501	-9,6%	5895	-49,4%
Paris	ORY	1809785	-10,7%	17181	-11,8%	6642	-12,6%
Barcelona	BCN	1622899	-21,8%	20317	-22,2%	6296	-14,6%
Zurich	ZRH	1504421	-2,1%	17536	-4,9%	18217	-13,6%
Dublin	DUB	1446651	-7,9%	14482	-8,7%	N/A	N/A
Copenhagen	CPH	1303929	-14,3%	18097	-12,7%	N/A	N/A
London	STN	1287949	-11,4%	11935	-11,9%	13283	-21,6%
Manchester	MAN	1203647	-10,6%	12323	-14,3%	7039	-42,0%
Oslo	OSL	1198690	-12,8%	16387	-9,3%	4370	-27,7%
Milan	MXP	1198245	-31,7%	13683	-35,5%	20027	-43,6%
Vienna	VIE	1155452	-12,1%	18726	-9,5%	11209	-22,4%
Stockholm	ARN	1124956	-15,6%	14496	-14,7%	5468	-26,6%
Moscow	DME	1116835	-18,6%	12507	-14,9%	5941	-21,8%
Düsseldorf	DUS	1084477	-7,4%	14462	-12,9%	3968	2,4%
Brussels	BRU	1013550	-15,0%	15889	-18,5%	29234	-52,9%
Moscow	SVO	979510	-3,4%	12193	-7,1%	5481	-24,5%
Athens	ATH	949661	-6,9%	13066	-3,7%	6899	-14,7%
Helsinki	HEL	942167	-6,4%	13860	-7,0%	5872	-44,9%
Berlin	TXL	915022	-8,5%	11196	-8,1%	1237	-8,0%
Lisbon	LIS	874339	-3,9%	10539	-5,9%	5348	-15,4%
Gran Canaria	LPA	848955	-6,2%	9007	-6,4%	2482	-19,1%
Hamburg	HAM	774061	-10,7%	10015	-13,3%	4711	-24,7%
Palma De Mallorca	PMI	730771	-8,3%	8659	-6,8%	1285	-7,4%
Tenerife	TFS	672143	-13,2%	4667	-16,8%	603	-20,1%
Prague	PRG	650085	-13,9%	11832	-9,6%	2474	-27,5%
Cologne	CGN	572810	-12,5%	8635	-9,3%	40836	-11,8%
Malaga	AGP	564972	-19,2%	6158	-22,7%	308	-21,2%
Birmingham	BHX	561977	-2,5%	7154	-6,1%	602	-44,3%
Edinburgh	EDI	554210	-6,4%	8086	-9,8%	2064	52,3%
Nice	NCE	542114	-10,0%	7522	-12,2%	771	46,3%
Stuttgart	STR	530738	-13,9%	8186	-14,7%	1162	-28,5%
Warsaw	WAW	529569	-18,2%	9310	-17,9%	2457	-20,7%
Milan	LIN	520364	-26,4%	7360	-10,6%	1037	-28,6%
Budapest	BUD	486541	-9,8%	7804	-10,8%	3200	-29,5%
Alicante	ALC	457866	-15,6%	4413	-16,1%	233	-34,6%
Milan	BGY	449306	4,2%	4659	-8,1%	7164	-34,1%
Toulouse	TLS	442717	-5,7%	6198	-3,5%	4431	-0,3%
Glasgow	GLA	440766	-13,4%	5517	-14,0%	121	-59,4%
Moscow	VKO	431688	-9,0%	6353	-12,3%	1486	24,6%
Marseille	MRS	427765	-10,0%	6735	-12,8%	3432	-2,9%
Berlin	SXF	415044	5,5%	4340	7,0%	298	3,8%
Venice	VCE	377857	-13,0%	5069	-8,1%	2130	44,5%
Lanzarote	ACE	372987	-15,3%	3489	-18,0%	329	-23,6%
Bergen	BGO	328240	2,0%	5557	-3,7%	171	-36,4%
Rome	CIA	317003	-7,4%	2692	-9,1%	1277	-23,5%
Fuerteventura	FUE	312157	-8,8%	3056	-7,9%	171	-27,1%
Nuremberg	NUE	309528	-4,7%	4276	-13,2%	599	-41,7%
Porto	OPO	302253	-0,6%	4259	-2,8%	1898	-24,5%
Hanover	HAJ	287942	-12,5%	4291	-15,0%	201	-60,6%
East Midlands	EMA	286504	-16,6%	4929	-7,4%	19430	-14,7%
Naples	NAP	285980	-18,2%	3935	-11,5%	56	-46,3%
Girona	GRO	285586	-14,3%	2720	-14,5%	6	-78,3%
Tenerife	TFN	278026	-8,0%	4488	-6,5%	1403	-13,6%
Gothenburg	GOT	267057	-18,1%	4091	-17,5%	2832	-31,4%
Valencia	VLC	266424	-31,9%	4934	-24,9%	692	-38,5%
Sofia	SOF	262506	14,3%	3436	13,1%	1053	4,1%
Turin	TRN	256728	-11,3%	4043	-0,5%	72	0,0%
Riga	RIX	256685	10,3%	4462	17,5%	343	5,2%
Sevilla	SVQ	245490	-20,3%	3449	-21,9%	311	-44,4%
Trondheim	TRD	240597	-1,1%	3773	1,4%	146	-23,8%
Stavanger	SVG	239772	-1,0%	4068	-0,4%	229	-21,0%
Basel	BSL	218041	-12,2%	3674	-13,4%	2356	-20,8%
Hahn	HHN	218040	-3,4%	2772	1,9%	6091	-25,4%
Bordeaux	BOD	213051	-9,1%	3457	-11,6%	601	-1,7%
Aberdeen	ABZ	212074	-8,6%	7638	-5,8%	410	26,9%
Bilbao	BIO	211590	-24,0%	3283	-21,6%	207	-13,6%
Krakow	KRK	166307	-17,1%	2175	-16,0%	183	15,2%
Funchal	FNC	161151	-7,8%	1740	-3,1%	465	-5,3%
Faro	FAO	157699	-4,8%	1502	-3,4%	18	-45,9%
Bari	BRI	154193	-8,3%	2125	-12,2%	13	-90,4%
Malta	MLA	138208	-12,1%	1594	-9,3%	1194	-17,2%

Airport	Passengers		Commercial movements		Freight		
	 January 2009		 January 2009		 January 2009		
Stockholm	BMA	134999	-5,8%	2627	-4,9%	12	-57,1%
Glasgow	PIK	131882	-9,6%	1475	-4,8%	1064	-41,0%
Florence	FLR	114455	-9,1%	1899	-6,3%	10	61,7%
Tromsoe	TOS	110000	-4,5%	2426	-6,8%	158	-14,5%
Malmö	MMX	107119	-15,5%	1569	-20,8%	2050	-10,9%
Southampton	SOU	105227	-11,4%	2784	-12,9%	14	-58,8%
Bodo	BOO	100536	-4,8%	2875	-7,1%	113	-13,4%
Tallinn	TLL	99599	-18,7%	2216	-18,2%	1711	-22,9%
Vilnius	VNO	93145	-27,8%	1738	-38,2%	205	-36,7%
Ibiza	IBZ	87367	-6,8%	1723	0,5%	167	-27,1%
Ljubljana	LJU	79823	-16,6%	2410	-6,0%	478	-37,3%
Strasbourg	SXB	76163	-24,8%	2262	-20,9%	24	-31,4%
Bournemouth	BOH	63223	-4,7%	913	-1,5%	2	39,4%
Kristiansand	KRS	61359	3,5%	1598	7,5%	29	-39,0%
Brindisi	BDS	56302	-11,2%	837	-2,6%	10	148,3%
Menorca	MAH	55313	-14,8%	1267	-5,2%	163	-20,5%
Aalesund	AES	54249	2,0%	884	10,2%	70	-22,1%
Skopje	SKP	40518	-5,3%	775	5,0%	216	44,0%
Haugesund	HAU	32863	-17,1%	451	-35,3%	23	-52,4%
Toulon	TLN	30436	-15,0%	412	-19,1%	N/A	N/A
Humbeside	HUY	23354	-2,3%	1176	56,4%	69	-80,6%
Dubrovnik	DBV	18516	-10,3%	276	-3,8%	33	-45,0%
Liege	LGG	14073	57,4%	1821	-18,2%	33714,16	-28,0%

----- Preliminary traffic figures -----

Total commercial passengers

International passengers (enplaned + deplaned) + **domestic passengers** (enplaned + deplaned) + **direct transit passengers** (passengers who arrive at and depart from the airport on a flight bearing the same number. They are counted only ONCE).

Commercial movements

Landing or take off of an aircraft operating a scheduled or non scheduled commercial service.

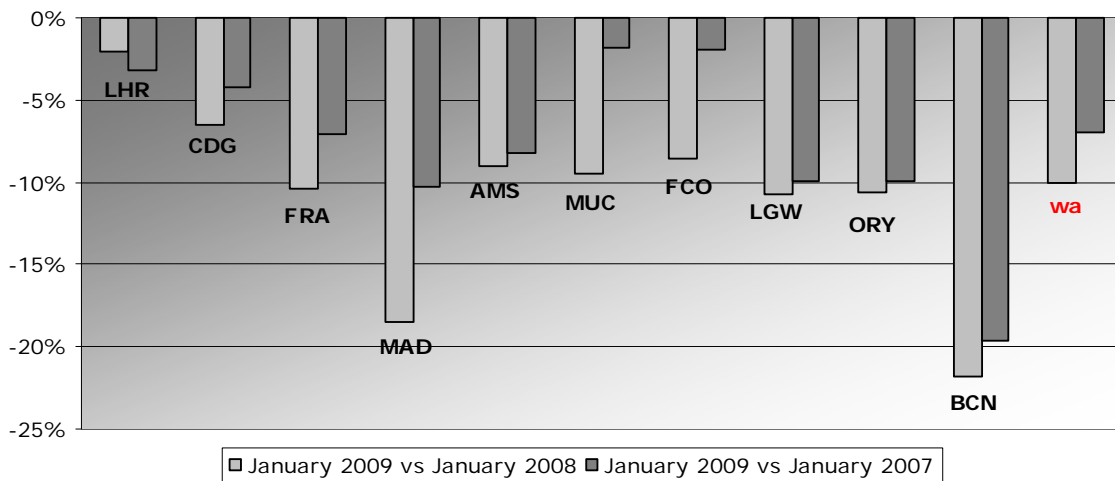
Freight

Freight loaded and unloaded (arriving or departing) at the airport. Freight comprises goods, newspapers, diplomatic bags, parcel post and express parcel.

Group 1
Airports welcoming more than 25 million passengers per year
(percentage traffic variation January 2009 versus 2008 and 2007)

Airport	2009v2008 variation %	2009v2007 variation %
LHR	-2,0%	-3,2%
CDG	-6,5%	-4,3%
FRA	-10,4%	-7,1%
MAD	-18,5%	-10,3%
AMS	-9,0%	-8,2%
MUC	-9,5%	-1,8%
FCO	-8,6%	-2,0%
LGW	-10,7%	-10,0%
ORY	-10,7%	-10,0%
BCN	-21,8%	-19,6%
wa*	-10,0%	-7,0%

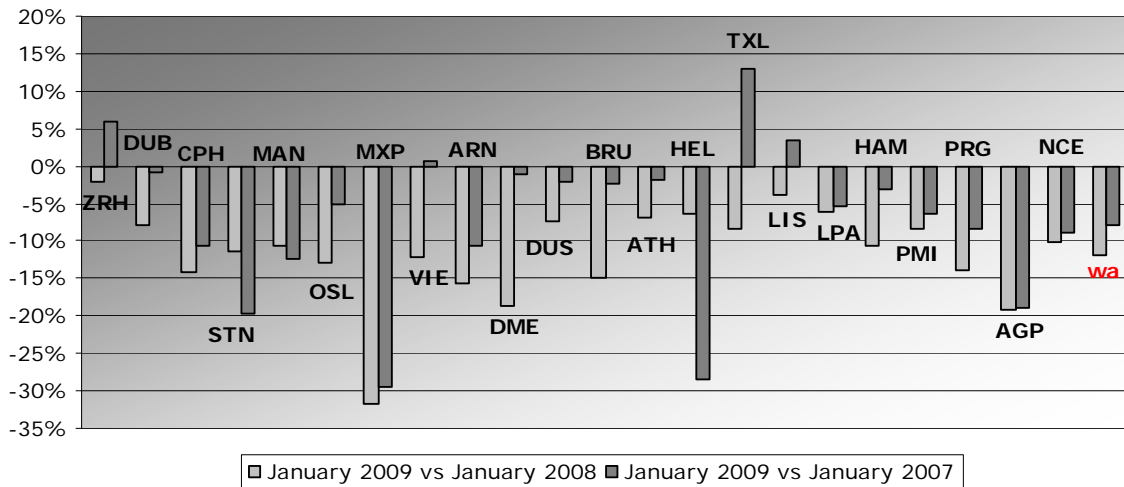
*weighted average=SUM(%change*pax)/SUM(pax)



Group 2
Airports welcoming between 10 and 25 million passengers
per year (percentage traffic variation January 2009 versus 2008 and 2007)

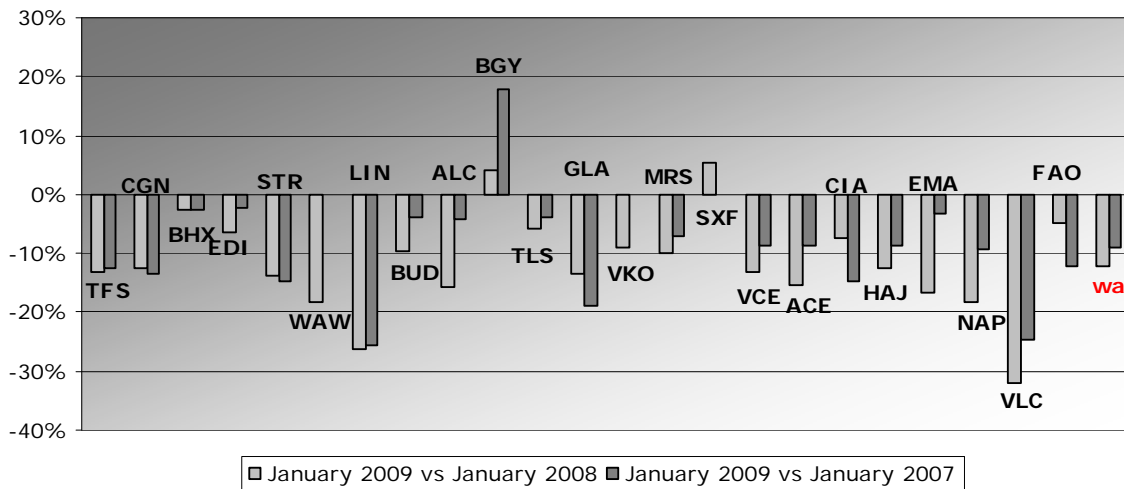
Airport	2009v2008 variation %	2009v2007 variation %
ZRH	-2,1%	6,0%
DUB	-7,9%	-1,0%
CPH	-14,3%	-10,5%
STN	-11,4%	-19,6%
MAN	-10,6%	-12,3%
OSL	-12,8%	-5,1%
MXP	-31,7%	-29,4%
VIE	-12,1%	0,6%
ARN	-15,6%	-10,7%
DME	-18,6%	-1,0%
DUS	-7,4%	-2,0%
BRU	-15,0%	-2,2%
ATH	-6,9%	-1,9%
HEL	-6,4%	-28,5%
TXL	-8,5%	12,9%
LIS	-3,9%	3,5%
LPA	-6,2%	-5,4%
HAM	-10,7%	-3,2%
PMI	-8,3%	-6,3%
PRG	-13,9%	-8,4%
AGP	-19,2%	-18,9%
NCE	-10,0%	-8,8%
wa*	-12,0%	-8,0%

*weighted average=SUM(%change*pax)/SUM(pax)



Group 3 Airports welcoming between 5 and 10 million passengers per year (percentage traffic variation January 2009 versus 2008 and 2007)		
Airport	2009v2008 variation %	2009v2007 variation %
TFS	-13,2%	-12,5%
CGN	-12,5%	-13,5%
BHX	-2,5%	-2,6%
EDI	-6,4%	-2,2%
STR	-13,9%	-14,7%
WAW	-18,2%	N/A
LIN	-26,4%	-25,5%
BUD	-9,8%	-3,8%
ALC	-15,6%	-4,3%
BGY	4,2%	17,9%
TLS	-5,7%	-3,8%
GLA	-13,4%	-19,0%
VKO	-9,0%	N/A
MRS	-10,0%	-7,2%
SXF	5,5%	N/A
VCE	-13,0%	-8,7%
ACE	-15,3%	-8,7%
CIA	-7,4%	-14,7%
HAJ	-12,5%	-8,8%
EMA	-16,6%	-3,3%
NAP	-18,2%	-9,4%
VLC	-31,9%	-24,5%
FAO	-4,8%	-12,2%
wa*	-12,1%	-8,9%

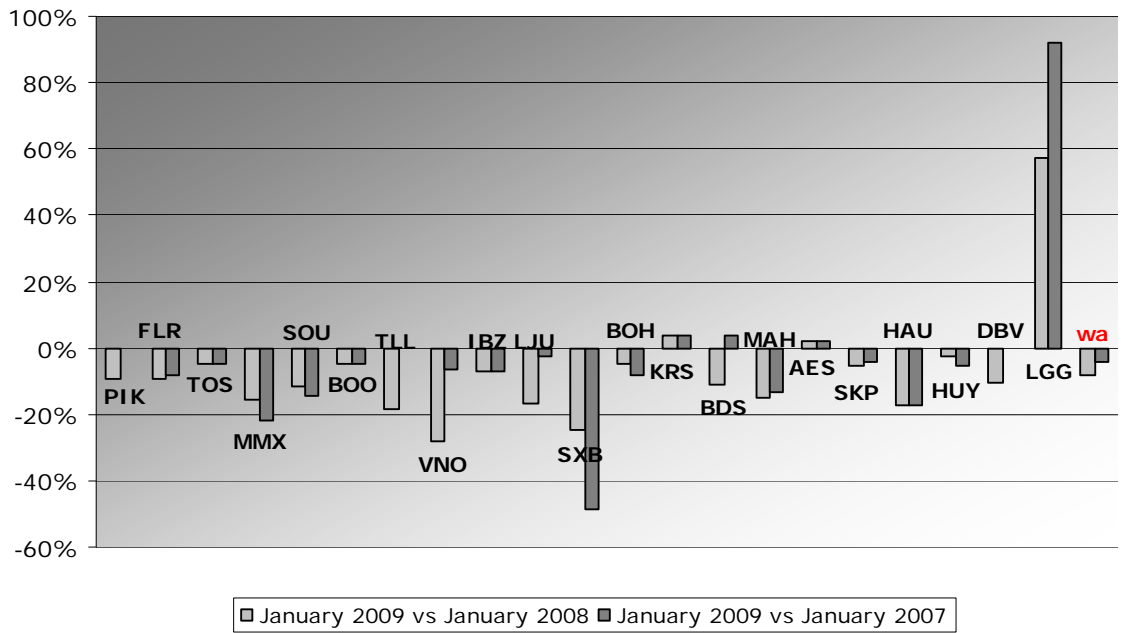
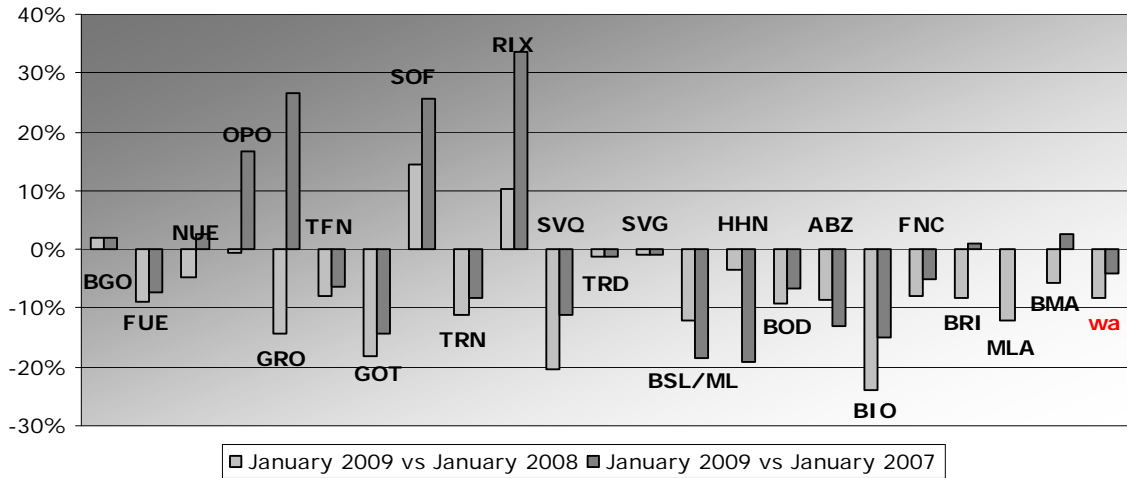
*weighted average=SUM(%change*pax)/SUM(pax)



Group 4
Airports welcoming less than 5 million passengers
per year (percentage traffic variation January 2009 versus 2008 and 2007)

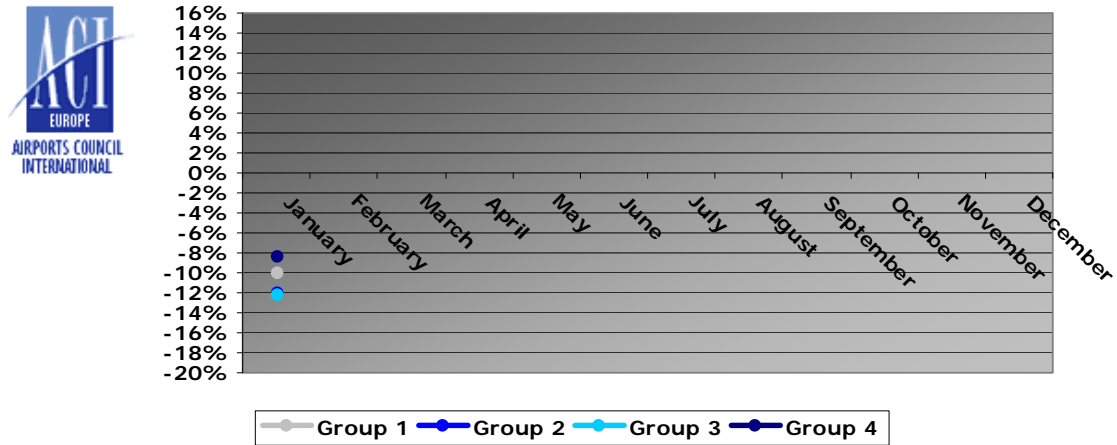
Airport	2009v2008 variation %	2009v2007 variation %
BGO	2,0%	2,0%
FUE	-8,8%	-7,3%
NUE	-4,7%	2,6%
OPO	-0,6%	16,8%
GRO	-14,3%	26,6%
TFN	-8,0%	-6,2%
GOT	-18,1%	-14,4%
SOF	14,3%	25,5%
TRN	-11,3%	-8,1%
RIX	10,3%	33,6%
SVQ	-20,3%	-11,1%
TRD	-1,1%	-1,1%
SVG	-1,0%	-1,0%
BSL/ML	-12,2%	-18,5%
HHN	-3,4%	-19,1%
BOD	-9,1%	-6,7%
ABZ	-8,6%	-12,9%
BIO	-24,0%	-15,0%
FNC	-7,8%	-5,2%
BRI	-8,3%	0,9%
MLA	-12,1%	N/A
BMA	-5,8%	2,6%
PIK	-9,6%	N/A
FLR	-9,1%	-8,0%
TOS	-4,5%	-4,5%
MMX	-15,5%	-22,0%
SOU	-11,4%	-14,2%
BOO	-4,8%	-4,8%
TLL	-18,7%	N/A
VNO	-27,8%	-6,2%
IBZ	-6,8%	-6,8%
LJU	-16,6%	-2,5%
SXB	-24,8%	-48,4%
BOH	-4,7%	-8,1%
KRS	3,5%	3,5%
BDS	-11,2%	3,7%
MAH	-14,8%	-13,3%
AES	2,0%	2,0%
SKP	-5,3%	-4,1%
HAU	-17,1%	-17,1%
HUY	-2,3%	-5,6%
DBV	-10,3%	N/A
LGG	57,4%	91,9%
wa*	-8,3%	-4,0%

*weighted average=SUM(%change*pax)/SUM(pax)



Year-to-date airport passenger trends

The graphic illustrates and compares the trends of the different airport Groups 1, 2, 3 and 4 for 2009.



The graphic compares the amount of total commercial passengers 2009 with 2008. The airports included, in this graphic, are: LHR, FRA, CDG, AMS, MAD, LGW, FCO, MUC, BCN, ORY, STN, MAN, MXP, ZRH, CPH, ARN, DUB, OS L, BRU, VIE, DUS, ATH, PMI, AGP, DME, HEL, TXL, LIS, HAM, PRG.

